

IHM PRESENTATION

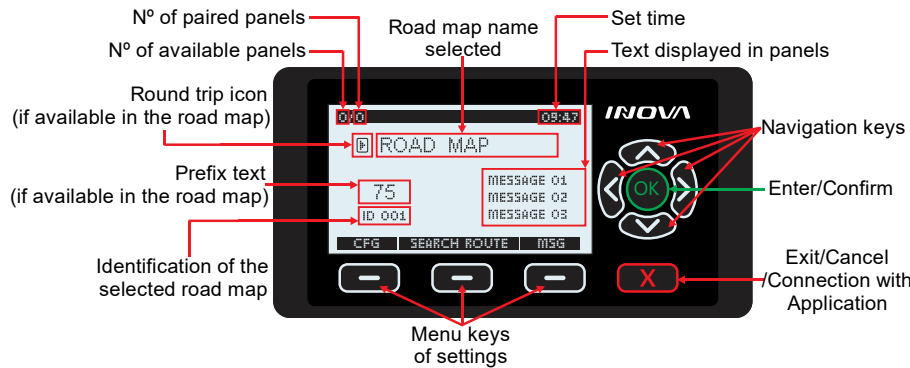


QUICK USE GUIDE Electronic Panel System

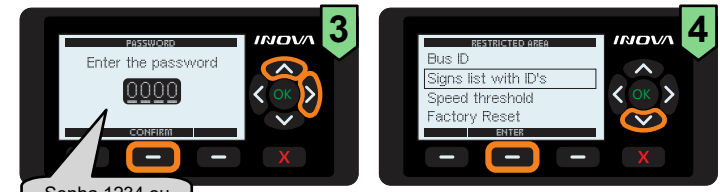
MNITV11#3
18/01/2022

PAIRING BETWEEN IHM AND PANELS

- MENU 'CFG':**
- Signs:** Brightness and Extra Messages.
 - Preferences:** Clock, Brightness, Contrast and Volume.
 - Restricted area:** Change Password, Language, Temperature Unit, Speed Unit, Bus ID, Signs list with ID's, Speed threshold and Factory Reset.



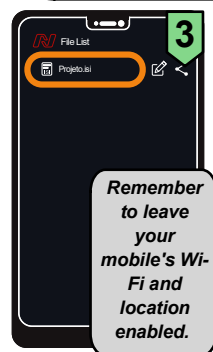
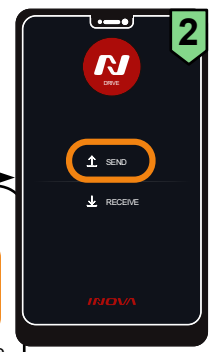
Power up IHM and panels together.



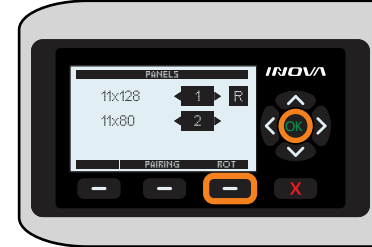
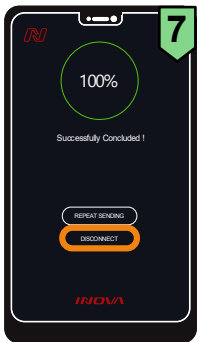
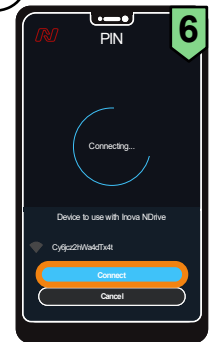
By pressing the ROT key the selected panel rotates.
OK key saves settings.
Panel will display the message :ROT:

TRANSFER OF PROJECTS FROM NDRIVE TO IHM

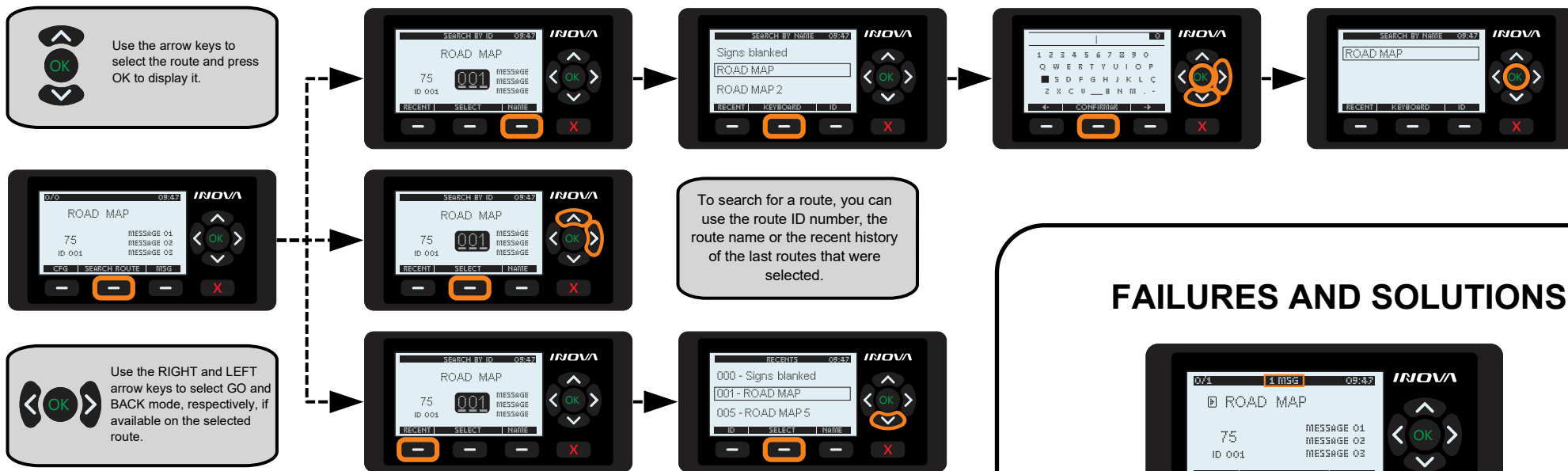
Install Ndrive App:
Available on Google Play and Apple Store.



Remember to leave your mobile's Wi-Fi and location enabled.



ROUTE SEARCH



FAILURES AND SOLUTIONS



MAIN FEATURES

- Power: 10~32Vdc;
- 6mA consumption at 24Vdc (Power: 144mW);
- Case material: Standard ABS plastic;
- Maximum distance for data transmission between Cell Phone and IHM: 5 meters;
- Maximum distance for data transmission between IHM and Panel (open field): 80 meters;
- Description of IHM Connector pins:
 - Pin 1** – GND;
 - Pin 2** – +VDC;
 - Pin 3** – NTC Sensor - Measurement from -30°C to 100°C. Connect NTC to pins 1 and 3;
 - Pin 4** – Speed signal, use pin B8 of the Tachograph to connect to pin 4 of the IHM.

IHM connector



CONTACT



+52 (55) 5395 1542
México, CDMX

tecmov@tecmov.com

www.tecmov.com

• “Communication failure with panels”:

This fault will be displayed when a panel that has already been paired to the system is no longer recognized by the IHM. It will be displayed within the fault menu which panels were no longer found during the initial IHM check.

Check that the panels indicated by the fault remain on and functioning correctly.

• “Route file failed. Upload a new file”:

This fault will be displayed when the IHM does not recognize any available project files. Run the project transfer process to the IHM and send a project file (.isi) to the IHM.

• “Panels do not display messages”:

In case the panels do not display messages even after system startup, proceed as follows:

- Open the plastic maintenance cover on the back of the panel;
- Check if the red light is on;
- Check if the green light is flashing intermittently;
- Restart the system again and note the above items.

INOVA



REGISTERED COMPANY
ISO: 9001
ISO: 14001